



Northwest Scarborough Local Immigration Partnership

Partnership Council Meeting

January 18, 2011

Summary of Proceedings

Where We Have Come to Date...

Partnership Council Planning Meetings

Neighborhood Research

Gathering Facts and Demographics

Interviews with Community Members and Newcomers

Community Summit #1 – Apr 7, 2010

Vision for Integration of Newcomers / Highlighting Key Areas for Action and Innovation

Create Settlement Strategy for Review with Community

Community Summit #2 – November 23, 2010

Deepen the Settlement Strategy and Develop Implementation Plan

Community Summit #3 – January 11, 2010

Partnership Council Meeting – Today

Group Exercise

- You will be assigned 4-5 strategies to review
- On your own:
 - Review the recommended activities and answer the following questions (10 minutes):
 1. Which of the activities outlined do you think will make the most difference for enhancing the newcomer experience?
 2. Which activities are aligned with your current direction and focus as an organization?
 3. Which strategies represent something new and interesting for your organization?
 4. What elements of this plan do you feel most drawn to or have the most energy for?
 - Discuss the 4 questions in your team and be prepared to share your insights

Strategies 1 to 5

1. This is all about joint communication strategy – it is more cost effective if we do it together

- Maybe need to think about what is most feasible
 - Work with existing welcome packages and web sites
 - Maybe integrate into one web site for NWS
 - Feedback loop – showing to newcomers and getting feedback

3. Working together with a broader communication strategy could enhance our work – doing it together could have immediate and long term benefits

4. Drawn to web site / blogs – it is key – centres have computers with access – one web site could be the home site at all computers – way to gather more information – web is more useful as it can integrate changes easily

Strategies 6 to 10

1. #9 – Community led social gatherings – community events / walks – getting to know the community they live in – will decrease isolation
 - #8 – engaging resident and faith based groups to lead events etc. - sharing more about what is already happening (communication)
2. We have evaluation already – how to improve services – agencies have capacity for evaluation (ex. Survey monkey is easy) – needs assessment is big work
3. #7 – Strengthening faith based groups is new – lots of potential – many faith based groups are providing service but we don't know what everyone is doing – if we were more collaborative that would be great! – need to bring everyone together – aware of services
4. Drawn to? - #9 – Community events!

11-14

1. #11 – Welcome centre – permanent forum / networking among service providers (like LINC community meetings from the past – was great forum for sharing – also open to other providers who are not offering the service but could connect their clients
 - #12 – would be interested in exploring co-location – need terms of reference – something to base it on
 - #14 – support upgrade of web site ◊ valuable link to other web sites – will be hard to find ways to provide updates
2. Partnerships – have done before and will be again
3. #11-14 – not new ideas but would like to work harder to make it happen (co-location / network)
4. Drawn to... networking meetings among service providers
Need compelling vision about what is possible

15-18

1. Communication is the biggest piece - #15 – already out there – matter of knowing who is doing it – need to be able to has a resource to know what is out there – Training / Language training – need to know where – how to access
2. Most already happening – need to enhance availability and accessibility
3. Need for interpreters! – to get started – children have to interpret for them – being put in a bad position – **pool of interpreters** – use web site now that translates (short term programs to prep interpreters – need certified interpreters – how to train them) – AT&T language line

19-22

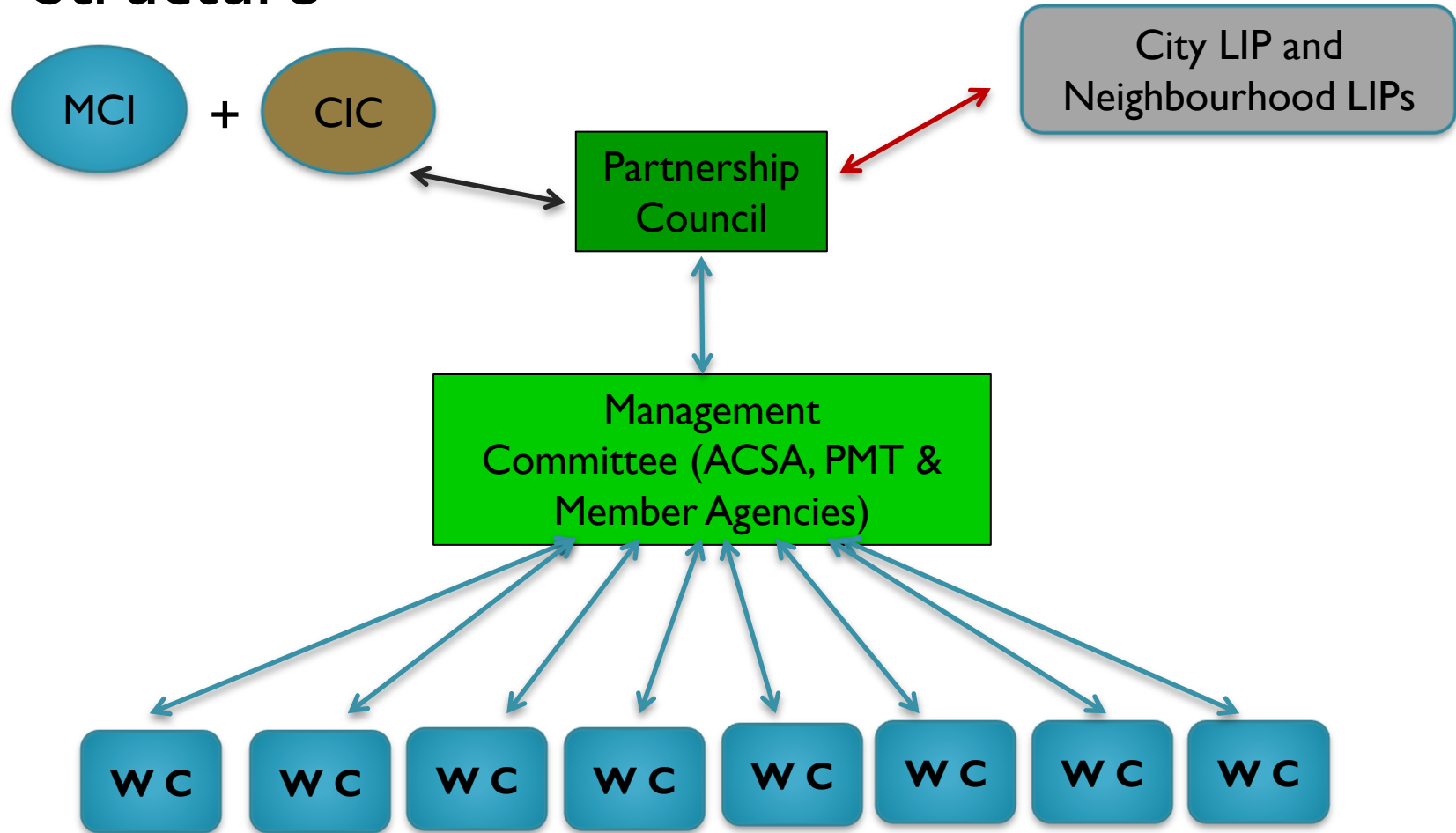
1. #20 – team to educate newcomers on tenant rights and advocate for affordable housing – (this is directly connected to mental health of the family)
 - Improve access to mental health services in NWS
2. Aligned? - #19 – facilitate training of capacity building of workers on mental health and health – improve accessibility to community education on healthy lifestyle
3. New? #20 – 5 – support newcomers to adapt to new environment / #21 – improve recreation facilities – ex seniors from diverse cultures
4. Community engagement is more engaging #7/8

Next Steps

- PC Members to do a final detailed review of the plan and make any suggestions: “what changes in language or content would make you comfortable with putting this plan forward?”
- Submit input by end of January
- Comments and any changes will be shared at next PC meeting for final review

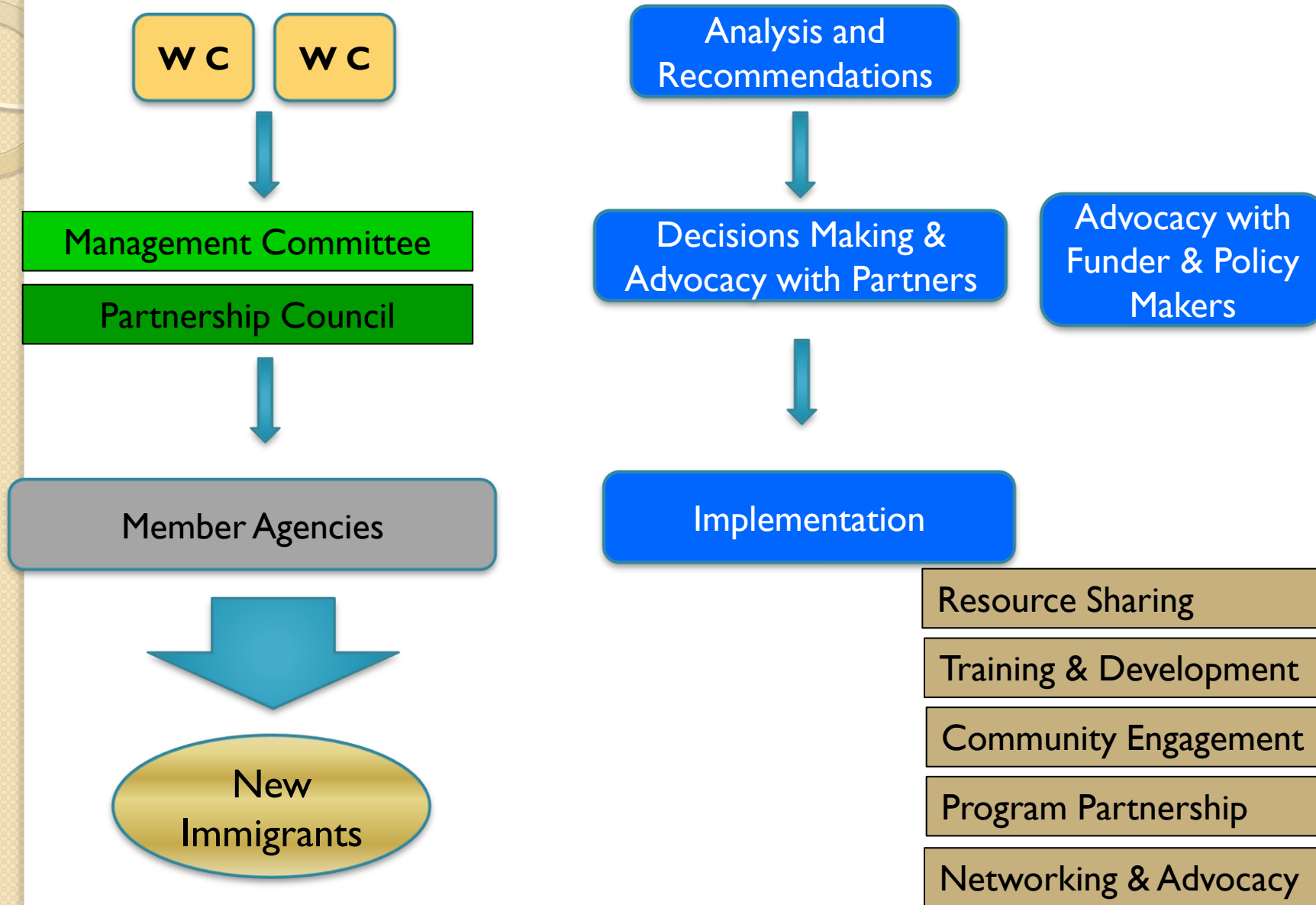
Implementation Phase

Structure



6 – 8 Working Committees work of Service accessibility, Employment, Education & Language, Settlement, Health, Recreation & Wellness, Community Engagement, Housing, Food & Safety

Functions



Evaluation

- Would like updates from other LIPs – are we on the same page
- Looking forward to making collaboration happen
- Valued chance to share across areas