

Voice of Newcomers

April, 2011
Issue 15

North West Scarborough Local Immigration Partnership

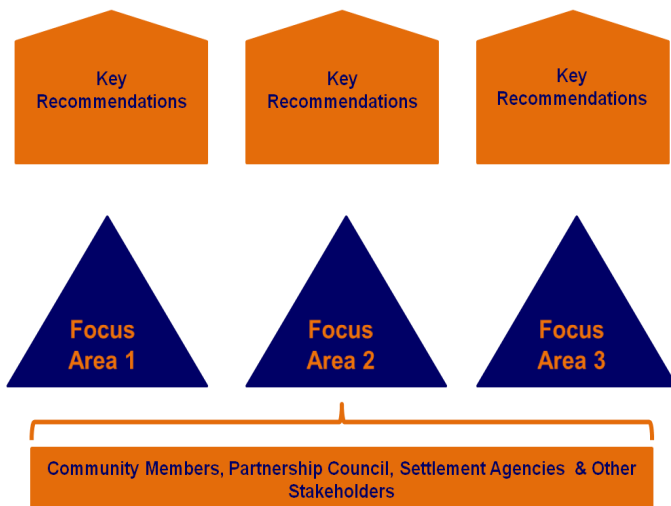
Overview

The North West Scarborough Local Immigration Partnership (NWS LIP), is a Citizenship & Immigration Canada (CIC) funded initiative. It is established as a collaborative framework that will development and implementation sustainable local and regional solutions for the successful integration of new immigrants to the community.

Through our efforts the LIP helps to put immigration on the governments overall planning agenda in order for the entire community to benefit from the successful social and economic integration of its new immigrants.

Strategic Plan

North West Scarborough LIP Strategy



To develop the NWS LIP Strategic Plan many discussions took place with the community, LIP Partnership Council members, Settlement Agencies as well as with other external immigration stakeholders.

From these discussions three main Focus Areas were prioritized:

- * Improve access to relevant and useful newcomer information and welcoming
- * Community groups are more engaged and better equipped to assist newcomers in the settlement process
- * Ensure effective service delivery through the coordination and partnership among service providers

Continues to page 2...

Inside this issue:

| | |
|-----------------------------------|---|
| Overview | 1 |
| Strategic Plan | |
| Project Structure | 2 |
| Partnership Council | |
| Working Committees | 3 |
| Newcomer & Community Expectations | |
| Phase 2: Strategy Implementation | |
| Catchment Area | 4 |
| NWS LIP 2011-2012 Calendar | 5 |

After further analysis and consultation Key Recommendations were formed for each Focus Area.

These include,

Focus Area 1

- * Improve access to online information
- * Provide pre-arrival & post arrival information
- * Capacity development within newcomer centres
- * Coordinated outreach methods
- * Improve inter agency communication

Focus Area 2

- * Engage community groups in planning
- * Strengthen community capacity to provide relevant information and guidance
- * Agency and resident group collaboration
- * Support community driven activities

Focus Area 3

- * Establish one-stop service centres
- * Promote sector focused collaboration and partnerships
- * Strengthen existing networks and local initiatives
- * Improve training and access to pre-employment training and mentoring

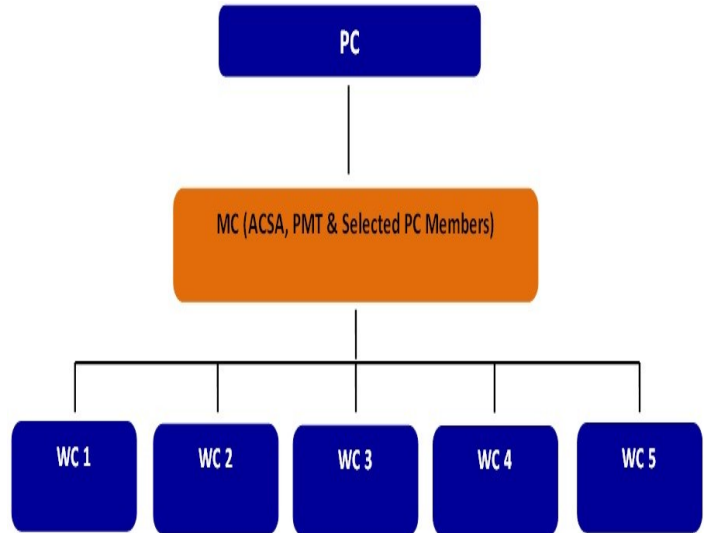
The NWS LIP settlement strategy evolved from the above key recommendations. There are 16 overall strategies. Each of the strategies is accompanied by related activities as identified by the NSW LIP development process. An implementation plan has also been created to assist the NWS LIP to move forward in achieving its goals.

Project Structure

In order to effectively implement the settlement strategy the LIP has put into place a working body that will be responsible for various activities identified.

The structural body will consist of the Partnership Council (PC), which are made up of service agencies and community members. Secondly a Management Committee (MC) that is represented by the lead agency Agincourt Community Services Association (ACSA), the LIP Project Management Team, and selected PC members.

Finally the basis of this structure are the sector specific Working Committees (WC).



Partnership Council Agencies

- Access Employment
- Action for Neighbourhood Change (ANC) – Steeles/L'Amoreaux
- Afghan Association of Ontario
- Agincourt Community Services Association (ACSA)
- Aisling Discoveries Child and Family Centre
- Carefirst Seniors and Community Services Association
- The Canadian Centre for Victims of Torture
- Canadian National Institute for the Blind (CNIB)
- Canadian Tamil Youth Development
- Catholic Cross Cultural Services
- Centre for Information and Community Services (CICS)
- Chinese Family Services of Ontario
- City of Toronto - Social Development, Finance & Administration
- East Metro Youth Services
- Elizabeth Fry Toronto
- Hong Fook Mental Health Association
- Mennonite New Life Centre of Toronto
- Operation Springboard
- Scarborough Housing Help Centre
- The Scarborough Hospital
- Scarborough North Employment & Social Services
- Settlement Assistance and Family Support Services
- The Tamil Eelam Society of Canada (TESOC)
- TransCare Community Support Services (Scarborough Support Services for the Elderly)
- Toronto Catholic District School Board - Continuing Education Department
- Toronto District School Board
- Toronto Community Housing
- Toronto Public Health
- Toronto Public Library
- Tropicana
- VPI
- West Hill Community Services - Scarborough West Community Health
- West Scarborough Neighbourhood Community Centre
- YMCA Newcomer Information Centre (Scarborough, Milner)
- Youthlink

Continues to page 3...

Working Committees

Working Committee 1: Access to information & Services - Enhance access to relevant and current information enhance easy access to information and services, Improving newcomers Information/ resource centres

Working Committee 2: Education, Training & Employment - Enhance employment and professional volunteering and placement opportunities, Increase job placements, internship and job opportunities, Increase skills development training

Working Committee 3: Health & Wellness - Enhance access to mental and general health services, Improve access to different health services, Community education on health related topics, Health services available in different languages

Working Committee 4: Community Engagement & Social Inclusion - Engage community groups and residents for faster social integration, Community capacity building, Conduct community education and awareness Promote community leadership, Support social cohesion and integration initiatives, Support community led programs and events

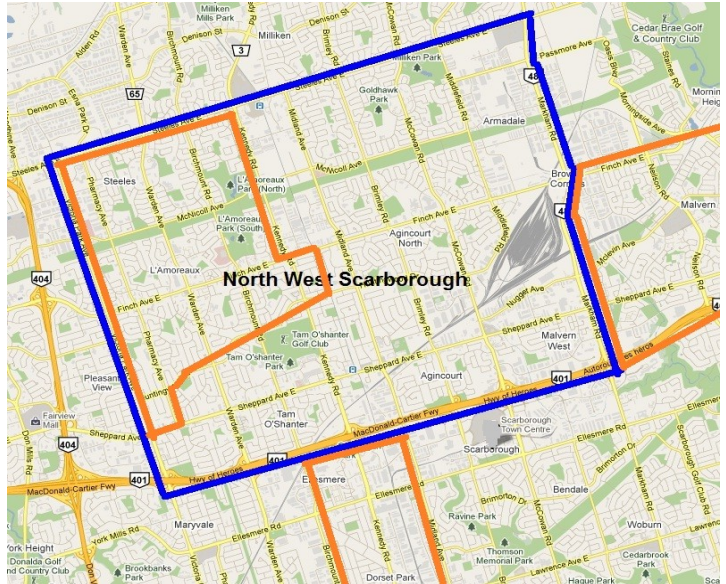
Working Committee 5: Family Settlement and Legal Support - Provide better family settlement and legal support, Expand family counselling, Provide family services in different languages, Awareness on newcomer fraud and scams, Provide housing support and educate on housing matters, Programs on community, individual safety, and transportation orientation, Awareness on financial systems, Education on food security

Phase 2: Strategy Implementation

A few selected short-term activities will be implemented in phase two over the duration of April 2011 to March 2012.

The first half of this phase will be in preparation and initiating the most feasible short-term activities. The remaining half will involve the evaluation of the implemented activities, implementing additional activities and selecting and planning for long term activities.

In order to achieve these goals, the LIP project will continue to work towards strengthening the Partnership Council by reaching out to additional community members and stakeholders .



Catchment Area

The NWS LIP catchment boundaries are Steeles Avenue to the north, Markham Road to the east, Highway 401 to the south, and Victoria Park Avenue to the west. This area encompasses the six neighbourhoods of Steeles, L'Amoreaux, Agincourt, Agincourt South-Malvern West, Agincourt North, and Milliken all located within the City of Toronto. Not only does it include the priority neighbourhood of Steeles/L'Amoreaux but is also bordered by two others. Malvern to the east and Dorset Park to the South, as highlighted in orange above.

The population of the NWS area is **181,731**, which of these **128,270** are immigrants, constituting for a substantial **71%** of the NWS population being immigrants.

As the NWS LIP continues to progress and venture into the implementation phase of the project it plans to devise and carry out the necessary components to ultimately improve all outcomes for newcomers and the communities in which they reside.

Continues to page 4 ..



Newcomer & Community Expectations

Through various consultations including focus groups and community summits the NWS LIP Team extracted the wishes and concerns from the newcomer community directly. Then detailed expectations for the community were formed.

The NWS LIP would not have been able to identify these crucial areas and develop the 16 strategies without community involvement. The LIP Partnership Council is thankful to the community members for their invaluable contribution.

There is no doubt that their role will be more crucial during the implementation phase. Therefore, NWS LIP is interested in recruiting community residents as Partnership Council members and/ or Working Committee members.

We encourage and invite the community to contribute and engage in the implementation phase either as a member or non-member.

Community members who are interested in participating in the NWS LIP project or contributing as a non-member are encouraged to directly contact the Project Management Team:

331 Glendower Circuit—Unit 6
 Scarborough ON
 M1T 2Z7

Phone: 416-609-9393

E-mail:

krezwaniul@agincourtcommunityservices.com

NWS LIP 2011/2012

| January | | | | | | |
|---------|----|----|----|----|----|----|
| Su | M | Tu | W | Th | F | Sa |
| | | | | | | 1 |
| 2 | 3 | 4 | 5 | 6 | 7 | 8 |
| 9 | 10 | 11 | 12 | 13 | 14 | 15 |
| 16 | 17 | 18 | 19 | 20 | 21 | 22 |
| 23 | 24 | 25 | 26 | 27 | 28 | 29 |
| 30 | 31 | | | | | |

| February | | | | | | |
|----------|----|----|----|----|----|----|
| Su | M | Tu | W | Th | F | Sa |
| | | 1 | 2 | 3 | 4 | 5 |
| 6 | 7 | 8 | 9 | 10 | 11 | 12 |
| 13 | 14 | 15 | 16 | 17 | 18 | 19 |
| 20 | 21 | 22 | 23 | 24 | 25 | 26 |
| 27 | 28 | | | | | |

| March | | | | | | |
|-------|----|----|----|----|----|----|
| Su | M | Tu | W | Th | F | Sa |
| | | 1 | 2 | 3 | 4 | 5 |
| 6 | 7 | 8 | 9 | 10 | 11 | 12 |
| 13 | 14 | 15 | 16 | 17 | 18 | 19 |
| 20 | 21 | 22 | 23 | 24 | 25 | 26 |
| 27 | 28 | 29 | 30 | 31 | | |

| April | | | | | | |
|-------|----|----|----|----|----|----|
| Su | M | Tu | W | Th | F | Sa |
| | | | | | 1 | 2 |
| 3 | 4 | 5 | 6 | 7 | 8 | 9 |
| 10 | 11 | 12 | 13 | 14 | 15 | 16 |
| 17 | 18 | 19 | 20 | 21 | 22 | 23 |
| 24 | 25 | 26 | 27 | 28 | 29 | 30 |

| May | | | | | | |
|-----|----|----|----|----|----|----|
| Su | M | Tu | W | Th | F | Sa |
| | | | | | | |
| 1 | 2 | 3 | 4 | 5 | 6 | 7 |
| 8 | 9 | 10 | 11 | 12 | 13 | 14 |
| 15 | 16 | 17 | 18 | 19 | 20 | 21 |
| 22 | 23 | 24 | 25 | 26 | 27 | 28 |
| 29 | 30 | 31 | | | | |

| June | | | | | | |
|------|----|----|----|----|----|----|
| Su | M | Tu | W | Th | F | Sa |
| | | | 1 | 2 | 3 | 4 |
| 5 | 6 | 7 | 8 | 9 | 10 | 11 |
| 12 | 13 | 14 | 15 | 16 | 17 | 18 |
| 19 | 20 | 21 | 22 | 23 | 24 | 25 |
| 26 | 27 | 28 | 29 | 30 | | |

| July | | | | | | |
|------|----|----|----|----|----|----|
| Su | M | Tu | W | Th | F | Sa |
| | | | | | 1 | 2 |
| 3 | 4 | 5 | 6 | 7 | 8 | 9 |
| 10 | 11 | 12 | 13 | 14 | 15 | 16 |
| 17 | 18 | 19 | 20 | 21 | 22 | 23 |
| 24 | 25 | 26 | 27 | 28 | 29 | 30 |
| 31 | | | | | | |

| August | | | | | | |
|--------|----|----|----|----|----|----|
| Su | M | Tu | W | Th | F | Sa |
| | 1 | 2 | 3 | 4 | 5 | 6 |
| 7 | 8 | 9 | 10 | 11 | 12 | 13 |
| 14 | 15 | 16 | 17 | 18 | 19 | 20 |
| 21 | 22 | 23 | 24 | 25 | 26 | 27 |
| 28 | 29 | 30 | 31 | | | |

| September | | | | | | |
|-----------|----|----|----|----|----|----|
| Su | M | Tu | W | Th | F | Sa |
| | | | | | 1 | 2 |
| 3 | 4 | 5 | 6 | 7 | 8 | 9 |
| 10 | 11 | 12 | 13 | 14 | 15 | 16 |
| 17 | 18 | 19 | 20 | 21 | 22 | 23 |
| 24 | 25 | 26 | 27 | 28 | 29 | 30 |

| October | | | | | | |
|---------|----|----|----|----|----|----|
| Su | M | Tu | W | Th | F | Sa |
| | | | | | | 1 |
| 2 | 3 | 4 | 5 | 6 | 7 | 8 |
| 9 | 10 | 11 | 12 | 13 | 14 | 15 |
| 16 | 17 | 18 | 19 | 20 | 21 | 22 |
| 23 | 24 | 25 | 26 | 27 | 28 | 29 |
| 30 | 31 | | | | | |

| November | | | | | | |
|----------|----|----|----|----|----|----|
| Su | M | Tu | W | Th | F | Sa |
| | | 1 | 2 | 3 | 4 | 5 |
| 6 | 7 | 8 | 9 | 10 | 11 | 12 |
| 13 | 14 | 15 | 16 | 17 | 18 | 19 |
| 20 | 21 | 22 | 23 | 24 | 25 | 26 |
| 27 | 28 | 29 | 30 | | | |

| December | | | | | | |
|----------|----|----|----|----|----|----|
| Su | M | Tu | W | Th | F | Sa |
| | | | | | 1 | 2 |
| 3 | 4 | 5 | 6 | 7 | 8 | 9 |
| 10 | 11 | 12 | 13 | 14 | 15 | 16 |
| 17 | 18 | 19 | 20 | 21 | 22 | 23 |
| 24 | 25 | 26 | 27 | 28 | 29 | 30 |
| 31 | | | | | | |

| January | | | | | | |
|---------|----|----|----|----|----|----|
| Su | M | Tu | W | Th | F | Sa |
| 1 | 2 | 3 | 4 | 5 | 6 | 7 |
| 8 | 9 | 10 | 11 | 12 | 13 | 14 |
| 15 | 16 | 17 | 18 | 19 | 20 | 21 |
| 22 | 23 | 24 | 25 | 26 | 27 | 28 |
| 29 | 30 | 31 | | | | |

| February | | | | | | |
|----------|----|----|----|----|----|----|
| Su | M | Tu | W | Th | F | Sa |
| | | | 1 | 2 | 3 | 4 |
| 5 | 6 | 7 | 8 | 9 | 10 | 11 |
| 12 | 13 | 14 | 15 | 16 | 17 | 18 |
| 19 | 20 | 21 | 22 | 23 | 24 | 25 |
| 26 | 27 | 28 | 29 | | | |

| March | | | | | | |
|-------|----|----|----|----|----|----|
| Su | M | Tu | W | Th | F | Sa |
| | | | | | 1 | 2 |
| 3 | 4 | 5 | 6 | 7 | 8 | 9 |
| 10 | 11 | 12 | 13 | 14 | 15 | 16 |
| 17 | 18 | 19 | 20 | 21 | 22 | 23 |
| 24 | 25 | 26 | 27 | 28 | 29 | 30 |
| 31 | | | | | | |

Events

Partnership Council Meetings

June 14th 2011, 10am – 12:30pm
 August 16th 2011, 10am – 12:30pm
 October 18th 2011, 10am – 12:30pm
 December 6th 2011, 10am – 12:30pm
 February 14th 2012, 2pm – 4pm

Working Committee Meetings

3rd week of April
 4th week of June
 2nd week of September
 4th week of August
 4th week of January
 (Mornings 10-12pm or Afternoons 2:30-4:30pm)

Management Committee Meetings

May 10th 2011, 10am – 12pm
 July 12th 2011, 10am – 12pm
 September 13th 2011, 10am – 12pm
 November 15th 2011, 10am – 12pm
 January 10th 2012, 10am – 12pm
 March 13th 2012, 10am – 12pm

Community Launch

September 27th 2011 Evening Event (5:30-8pm)

Public & Civic Holidays

2011: Jan. 1, Feb. 21, Apr. 22 & 24, May 23,
 Jul. 1, Aug. 1, Sep. 5, Oct. 10, Nov. 11,
 Dec. 23-25 & 31

2012: Jan. 1&2, Feb. 20